

# Old Champlain Canal - Overview



- The Old Champlain Canal is a culturally important and historically significant resource
- Close coordination with Village of Schuylerville and Town of Saratoga
- Long-term economic development plans for the Old Champlain Canal
- Sediments have accumulated in the Old Champlain Canal
- Maintenance necessary for proper flow and water level
- EPA and NYSDEC are coordinating to characterize the sediments
- GE is required to determine the extent of PCBs in the canal under the floodplain program



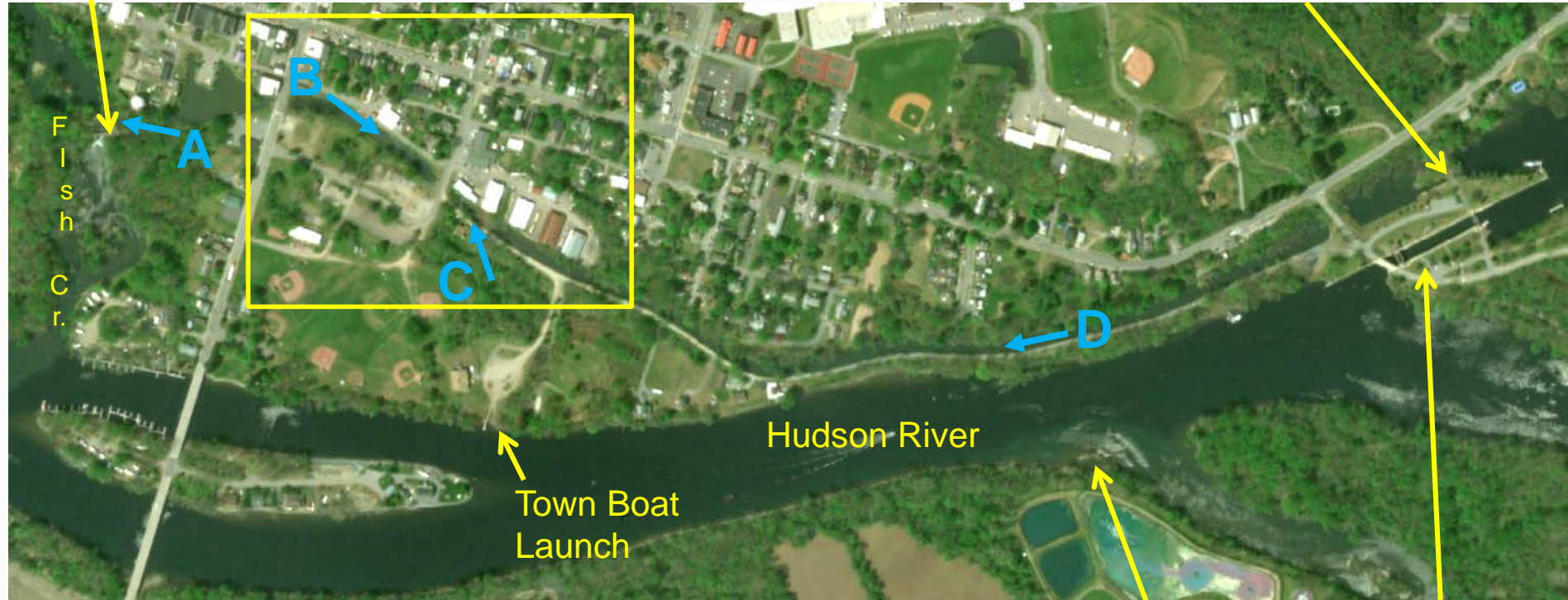
# Old Champlain Canal Existing Conditions



Outlet to  
Fish Creek

OCC Supplemental  
Study Area

Upstream Flow  
From Hudson River



X → Photo Locations and Directions

Confluence with  
Batten Kill

Lock 5 /  
Hudson  
Crossing  
Park

# Old Champlain Canal Existing Conditions



Photo B



Photo A (Outfall to Fish Creek)



OCC Supplemental Study Area



Locations of NYSDEC Elevated Results

# Old Champlain Canal Existing Conditions



Photo D

Photo C (Location of Elevated NYSDEC Result)



# Floodplain RI/FS



- Old Champlain Canal is being evaluated as part of the Floodplain RI/FS
- Included as a “Standing Water”
- Is unique from other standing water areas
  - Continuous flow
  - Hydraulically connected to the Hudson River
  - Known to be depositional
  - Requires regular maintenance
- Additional characterization is needed for canal sediment removal/maintenance



# Old Champlain Canal - Sampling

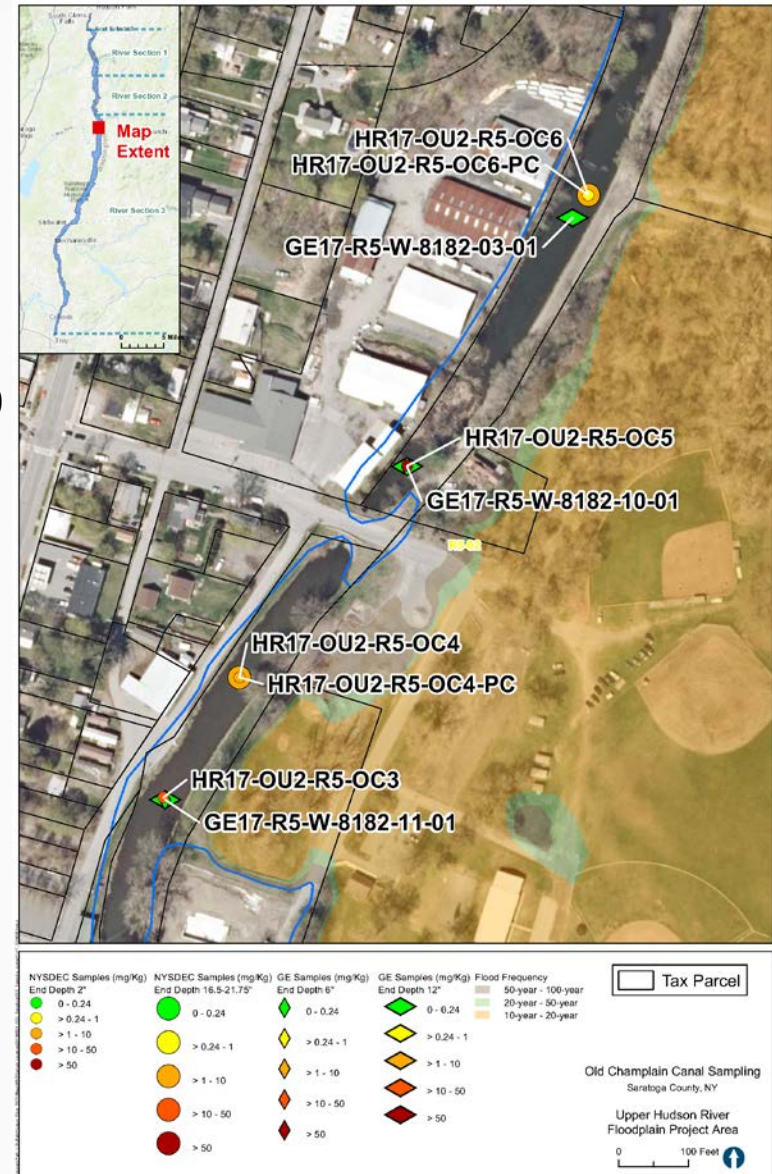


## EPA/GE Sampling – 2012 and 2017

- Collected as part of the Floodplain RI/FS program
- Samples collected to a depth of 1 and 2 feet
- Results indicate PCBs are present at low levels in the canal
- 16 Locations- Results range from 0.002(ND) to 1.9 ppm

## NYSDEC Sampling - 2017

- Collected as part of NYSDEC River surface sediment sampling program
- 6 surface sediment samples (0-2 inches)
  - 0.7 to 50.2 ppm
  - EPA and NYSDEC agreed additional sampling necessary results will resolve uncertainty
- 3 deeper samples (up to 2 feet)
  - 1.7 to 3.7 ppm



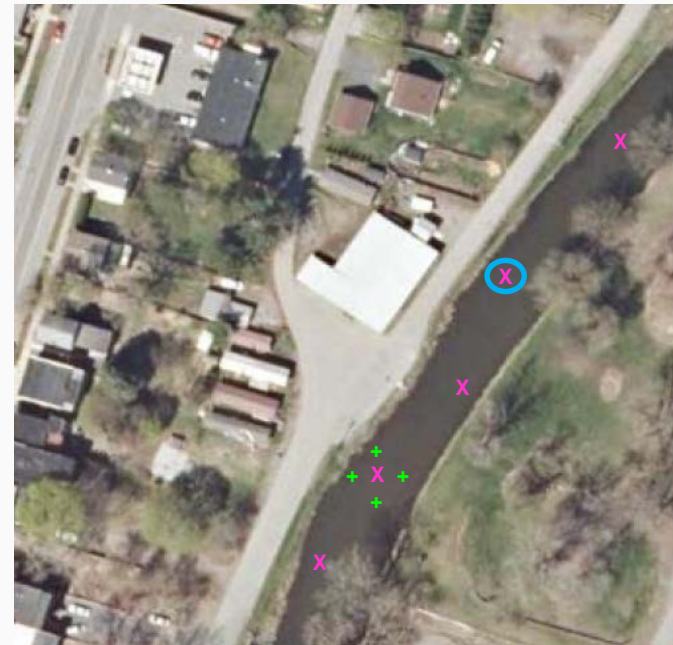
# Old Champlain Canal Supplemental Sampling Plan

## Phase 1



### 2019 Sampling Program

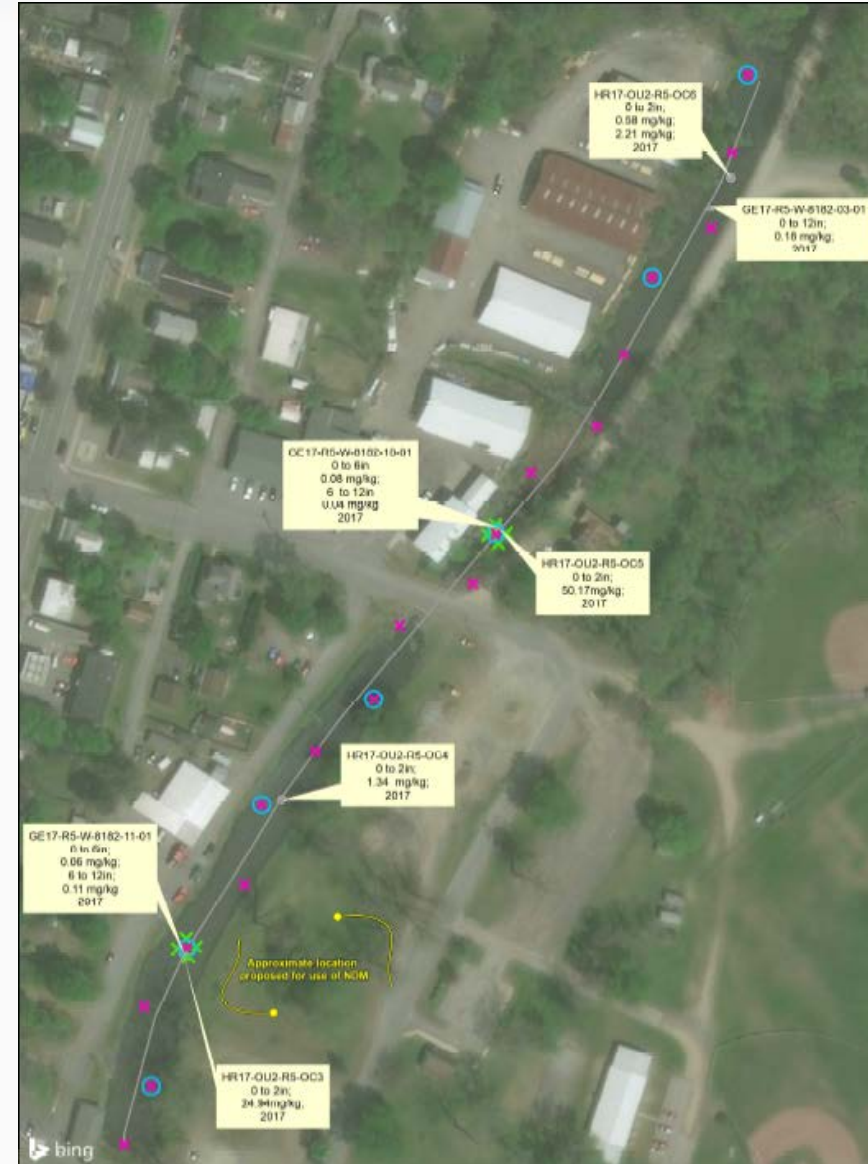
- Two phases of sampling being implemented this year:
  - Phase 1: Surface Sediment Sampling
  - Phase 2: Deeper Sediment Characterization
  
- **Phase 1**
  - Confirmation and Delineation of NYSDEC potential elevated PCB surface contamination
  - 26 Surface samples collected in May 2019 (results pending)
  - 10 locations initially analyzed, additional analyses based on results.



# Old Champlain Canal Supplemental Sampling Plan Phase 2



- **Phase 2:**
  - Deeper sediment characterization (PCBs and other parameters)
  - Two Purposes:
    - Required for RI/FS (nature and extent of contamination)
    - Required for sediment removal/maintenance
  - Samples numbers based on presence of PCBs in Canal
  - Developed in close coordination with Town, Village, and NYSDEC
  - GE specifically required to evaluate nature and extent of PCBs as part of floodplain program. GE has agreed to assist with other needed information.





# Old Champlain Canal Sampling: Next Steps



- EPA expects data (with preliminary QA/QC) from GE this week
- EPA needs to carefully QC that data given previous elevated levels detected by NYSDEC (coordinate with DEC)
- Next task has challenges given shallow nature of canal (access - pushing and pulling 5 ft cores)
- EPA to review scope of remaining work
- EPA will continue to keep Town and Village informed
- Floodplain work continues
  - Preliminary risk assessment
  - Short-term actions
  - Communication with floodplain residents